

POINT TABLE			
POINT NO.	NORTHING	EASTING	DESCRIPTION
1	482269.53	1569398.06	CHAIN LINK FENCE
2	482222.35	1569013.31	CHAIN LINK FENCE
3	482229.51	1568963.75	CHAIN LINK FENCE
4	482194.06	1568873.61	CHAIN LINK FENCE
5	482095.30	1568464.99	CHAIN LINK FENCE
6	481725.93	1568416.67	CHAIN LINK FENCE
7	481537.41	1568189.34	CHAIN LINK FENCE
8	481185.13	1568472.29	CHAIN LINK FENCE
9	481211.73	1568505.52	CHAIN LINK FENCE
10	481135.64	1568566.44	CHAIN LINK FENCE
11	481150.71	1568585.25	CHAIN LINK FENCE
12	481246.20	1568555.88	CHAIN LINK FENCE
13	481329.05	1568654.55	CHAIN LINK FENCE
14	481327.67	1568666.35	CHAIN LINK FENCE
15	481368.12	1568717.47	CHAIN LINK FENCE
16	481379.96	1568718.85	CHAIN LINK FENCE
17	481415.37	1568761.69	CHAIN LINK FENCE
18	481506.28	1568814.27	CHAIN LINK FENCE
19	481534.09	1568853.64	CHAIN LINK FENCE
20	481528.75	1568948.13	CHAIN LINK FENCE
21	481343.60	1569067.89	CHAIN LINK FENCE
22	481438.38	1569219.93	CHAIN LINK FENCE
23	481389.22	1569365.27	CHAIN LINK FENCE
24	481389.92	1569434.65	CHAIN LINK FENCE
25	481607.47	1569428.91	CHAIN LINK FENCE
26	482002.18	1569423.42	CHAIN LINK FENCE

DEVELOPMENT INFORMATION

OWNER CONTACT INFORMATION:
 JOHN SHUTAK, P.E.
 CIP PROGRAM MANAGER
 UNION COUNTY
 500 NORTH MAIN STREET
 MONROE, NORTH CAROLINA 28112
 JOHN.SHUTAK@UNIONCOUNTYNC.GOV
 704-283-3651

ENGINEER CONTACT INFORMATION:
 JONATHAN S. LAPSLEY, P.E., PMP
 CDM SMITH
 4600 PARK ROAD, SUITE 240
 CHARLOTTE, NORTH CAROLINA 28209
 LAPSLEYJ@CDMSMITH.COM
 704-342-4546

TOTAL AREA GRADED: 13.75 AC
 LIMITS OF DISTURBANCE: 25.98 AC
 CURRENT USE: NONE
 PARCEL NO: 08-051-010 ZONING: RA-40
 REQUIRED SETBACK, FT: FRONT 40; SIDE 15; REAR 40
 PROVIDED SETBACK, FT: FRONT 400; SIDE 40; REAR 1,100

PROPOSED USE: PUBLIC UTILITY (DRINKING WATER TREATMENT PLANT)
 MAX HEIGHT: 35 FT
 TOTAL BLDG: 30941 SQ FT
 ADDRESS: 3522 NEW SALEM ROAD, MONROE, NC 28110

NO OF EMPLOYEES: 10
 PARKING PER EMPLOYEE: 0.5
 NO OF PARKING SPACES REQUIRED: 5
 TOTAL NO OF PARKING SPACES: 25
 FEMA FIRM PANEL NO.: 3710545800J
 AREA OF MINIMAL FLOOD HAZARD (ZONE X)

- NOTES:**
- THOUGH IT MAY NOT BE ILLUSTRATED, SHOWN, LISTED DENOTED OR EXPRESSED; THIS PLAN SHALL COMPLY WITH ALL PROVISIONS OF THE UNION COUNTY DEVELOPMENT ORDINANCE AT TIME OF REVIEW AND APPROVAL.
 - A 30-FOOT RIGHT OF WAY ALONG THE FRONTAGE OF THIS PROPERTY ON NEW SALEM ROAD (AS MEASURED FROM THE CENTERLINE) WILL BE DEDICATED TO THE NCDOT FOR MAINTENANCE PURPOSES.
 - PARKING LOT SURFACE SHALL BE MAINTAINED IN SUCH A MANNER TO PREVENT, REPAIR OR REPLACE DETERIORATED SURFACE MATERIAL, POT HOLES AND MAJOR CRACKING OF IMPERVIOUS SURFACE MATERIAL AND STRIPING SHALL BE VISIBLE AND WELL DEFINED.

XREFS: [CDMS-2436_CEP000025_NC-PE-LAPSLEYJUS_CEP000025] Images: []
 Last saved by: WANW@CHTMD Time: 6/29/2022 2:59:05 PM
 C:\pwworking\cdm\1123289\COO3STPL.dwg
 © 2021 CDM SMITH. ALL RIGHTS RESERVED.
 REUSE OF DOCUMENTS: THESE DOCUMENTS AND DESIGNS PROVIDED BY PROFESSIONAL SERVICE, INCORPORATED HEREIN, ARE THE PROPERTY OF CDM SMITH AND ARE NOT TO BE USED, IN WHOLE OR PART, FOR ANY OTHER PROJECT WITHOUT THE WRITTEN AUTHORIZATION OF CDM SMITH.

REV. NO.	DATE	DRWN	CHKD	REMARKS
2	07/22	MDW	JSL	DCN 021
1	02/21	M.NOIBI	LAPSLEY	REVISED FOR UNION COUNTY COMMERCIAL SITE PLAN PERMIT

DESIGNED BY: M. NOIBI
 DRAWN BY: R. BOGGS
 SHEET CHK'D BY: M. NOIBI
 CROSS CHK'D BY: C. KOLKHORST
 APPROVED BY: J. LAPSLEY
 DATE: JANUARY 2021

4600 Park Road, Suite 240
 Charlotte, NC 28209
 Tel: (704) 342-4546
 F-1255



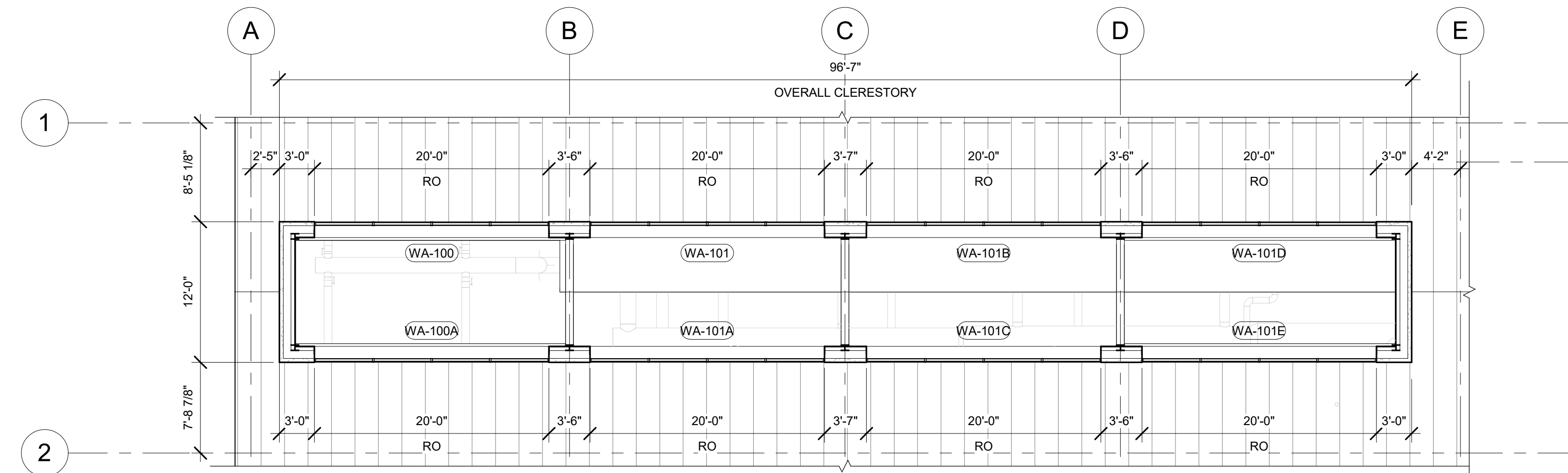
UNION COUNTY PUBLIC WORKS
 UNION COUNTY, NORTH CAROLINA
**YADKIN REGIONAL WATER SUPPLY
 WATER TREATMENT PLANT AND
 FINISHED WATER INFRASTRUCTURE**

KEY PLAN

PROJECT NO. 28600-231695
 FILE NAME: COO3STPL.DWG
 SHEET NO.
C-3

ISSUED FOR CONSTRUCTION

GENERAL NOTES:
 SEE SHEET A-001 FOR ADDITIONAL GENERAL NOTES, ABBREVIATIONS AND SYMBOLS
 METAL BUILDING COMPONENTS SHOWN ARE CONCEPTUAL FOR DESIGN INTENT ONLY. METAL BUILDING MANUFACTURER SHALL PROVIDE ACTUAL DESIGN CONSTRUCTION DETAILS.



CLERESTORY PLAN @ ELEV 554.00
 1/8" = 1'-0"



FLOOR PLAN
 1/8" = 1'-0"

© 2020 CDM SMITH. ALL RIGHTS RESERVED. REUSE OF DOCUMENTS, THESE DOCUMENTS AND DESIGNS PROVIDED BY PROFESSIONAL SERVICE, INCORPORATED HEREIN, ARE THE PROPERTY OF CDM SMITH AND ARE NOT TO BE USED, IN WHOLE OR PART, FOR ANY OTHER PROJECT WITHOUT THE WRITTEN AUTHORIZATION OF CDM SMITH.

REV. NO.	DATE	DRWN	CHKD	REMARKS
1	5/21	BAS	CES	DCN 008

DESIGNED BY: C. SOLLOG
 DRAWN BY: K. DEMARCO
 SHEET CHKD BY: C. SOLLOG
 CROSS CHKD BY: L. ARNON
 APPROVED BY: M. ALFORQ
 DATE: JANUARY 2021

CDM Smith
 4600 Park Road, Suite 240
 Charlotte, NC 28209
 Tel: (704) 342-4546
 F-1255

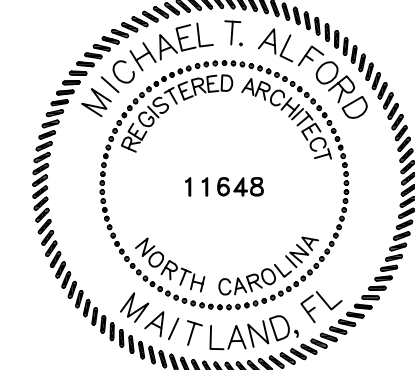


UNION COUNTY PUBLIC WORKS
 UNION COUNTY, NORTH CAROLINA
**YADKIN REGIONAL WATER SUPPLY
 WATER TREATMENT PLANT AND
 FINISHED WATER INFRASTRUCTURE**

**ADMINISTRATION BUILDING
 OVERALL FLOOR PLAN**

PROJECT NO: 28600-231695
 FILE NAME: AWZ0000B

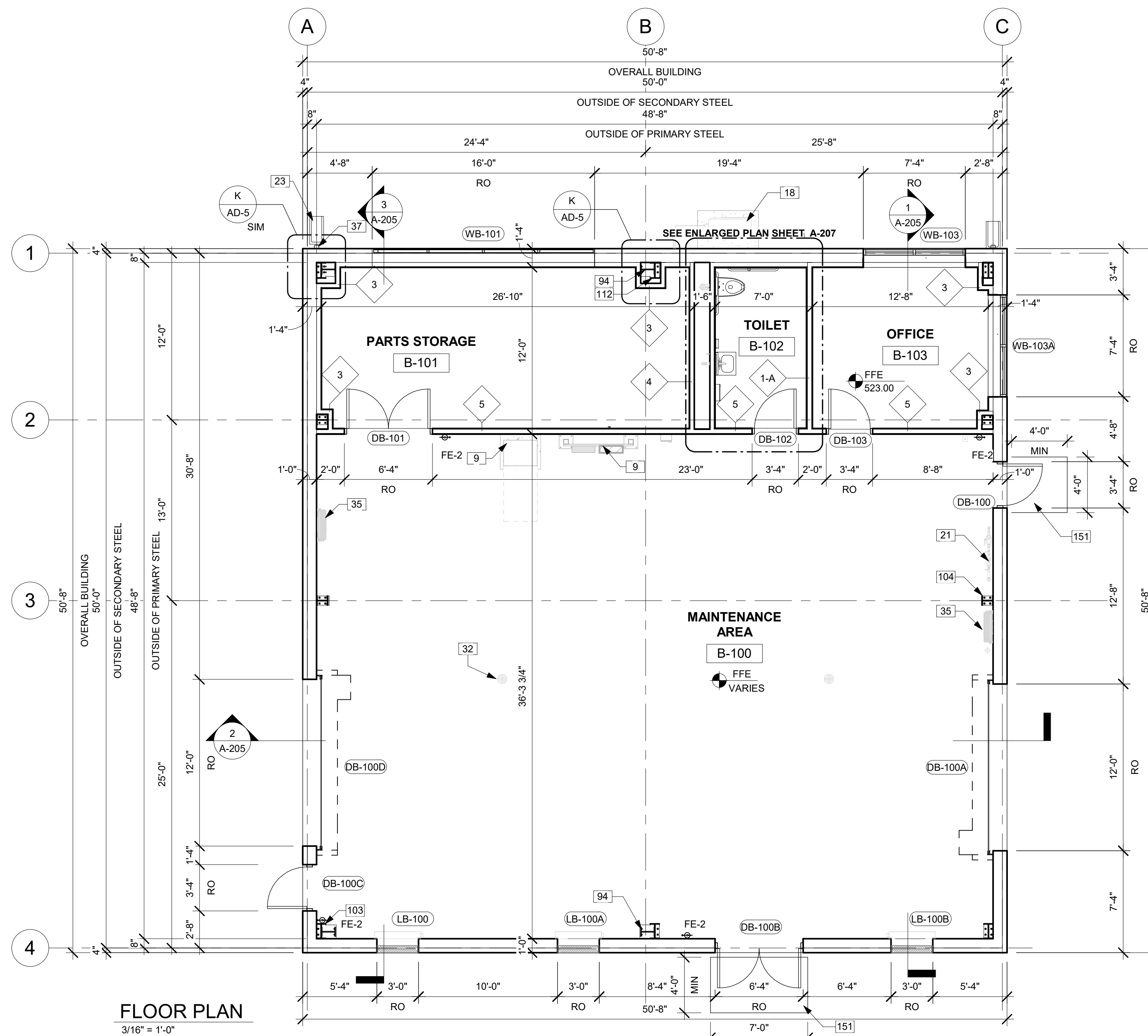
SHEET NO.
A-102



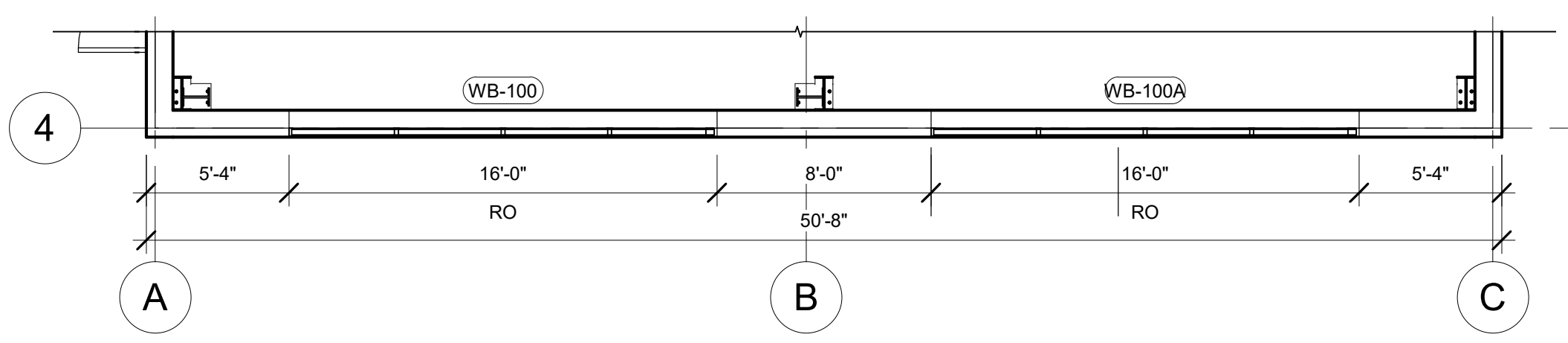
CDM Architects Inc.
 101 Southhall Lane
 Suite 200
 Maitland, Florida 32751

KEYNOTE LEGEND	
KEY VALUE	KEYNOTE TEXT
9	ELECTRICAL EQUIPMENT, SEE "E" DWGS
18	HVAC EQUIP. SEE "H" DWGS
21	PLUMBING PIPES, SEE "P" DWGS
23	PRECAST CONCRETE SPLASH BLOCK, TYP
32	FLOOR DRAIN, TYP, SEE "P" DWGS
35	WASH HOSE STATION, TYP, SEE "P" DWGS
37	DOWNSPOUT, TYP
94	PAINTED STEEL PORTAL FRAME, TYP
103	PAINTED STEEL BENT, TYP
104	PAINTED STEEL ENDWALL COLUMN, TYP
112	STEEL BENT FURRED WITH GYP BD TO MIN 6" ABOVE CEILING REMAINDER OF EXTENTS PAINTED
151	CONCRETE LANDING, TOP OF LANDING LEVEL WITH BUILDING SLAB ELEVATION, SEE "C" DWGS

GENERAL NOTES:
 SEE SHEET A-001 FOR ADDITIONAL GENERAL NOTES, ABBREVIATIONS AND SYMBOLS
 SEE SHEET G-8 FOR APPENDIX B CODE SUMMARY INFORMATION
 METAL BUILDING COMPONENTS SHOWN ARE CONCEPTUAL FOR DESIGN INTENT ONLY. METAL BUILDING MANUFACTURER SHALL PROVIDE ACTUAL DESIGN AND CONSTRUCTION DETAILS.
 SEE "S" DRAWINGS FOR FLOOR SLOPE IN MAINTENANCE AREA.



FLOOR PLAN
 3/16" = 1'-0"



PARTIAL PLAN ALONG GRID 4 @ EL 15'-0"
 3/16" = 1'-0"

© 2020 CDM SMITH. ALL RIGHTS RESERVED. REUSE OF DOCUMENTS, THESE DOCUMENTS AND DESIGNS PROVIDED BY PROFESSIONAL SERVICE, INCORPORATED HEREIN, ARE THE PROPERTY OF CDM SMITH AND ARE NOT TO BE USED, IN WHOLE OR PART, FOR ANY OTHER PROJECT WITHOUT THE WRITTEN AUTHORIZATION OF CDM SMITH.

REV. NO.	DATE	DRWN	CHKD	REMARKS

DESIGNED BY: C. SOLLQ
 DRAWN BY: D. DURGA
 SHEET CHKD BY: C. SOLLQ
 CROSS CHKD BY: L. ARNON
 APPROVED BY: M. ALFORD
 DATE: JANUARY 2021

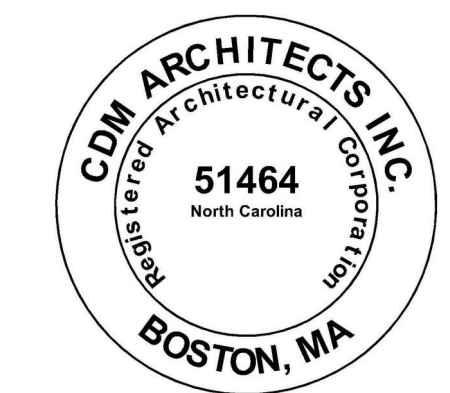
CDM Smith
 4600 Park Road, Suite 240
 Charlotte, NC 28209
 Tel: (704) 342-4546
 F-1255



UNION COUNTY PUBLIC WORKS
 UNION COUNTY, NORTH CAROLINA
**YADKIN REGIONAL WATER SUPPLY
 WATER TREATMENT PLANT AND
 FINISHED WATER INFRASTRUCTURE**

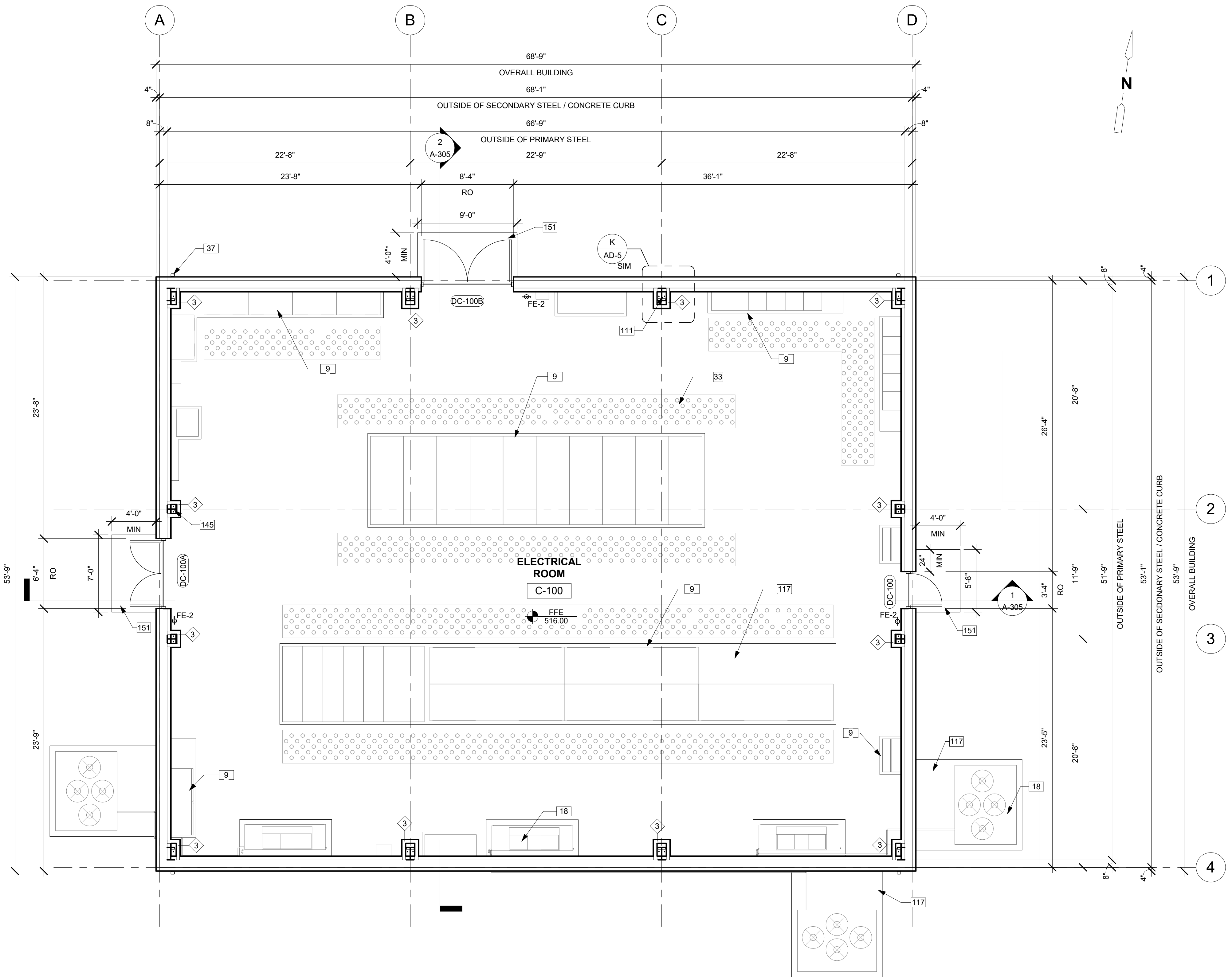
**MAINTENANCE BUILDING
 FLOOR PLAN**

PROJECT NO. 28600-231695
 FILE NAME: AWZ000MB.RVT
 SHEET NO. **A-202**



CDM Architects Inc.
 101 Southhall Lane
 Suite 200
 Maitland, Florida 32751

KEYNOTE LEGEND	
KEY VALUE	KEYNOTE TEXT
9	ELECTRICAL EQUIPMENT, SEE "E" DWGS
18	HVAC EQUIP, SEE "H" DWGS
33	FLOOR MATS, TYP
37	DOWNSPOUT, TYP
111	STEEL BENT FURRED WITH GYP BD TO 12'-0" AFF, REMAINDER OF EXTENTS PAINTED
117	CONCRETE EQUIPMENT PAD, SEE "S" DWGS
145	STEEL ENDWALL COLUMN FURRED W/ GYP BD TO 12'-0" AFF, REMAINDER OF EXTENTS PAINTED
151	CONCRETE LANDING, TOP OF LANDING LEVEL WITH BUILDING SLAB ELEVATION, SEE "C" DWGS



GENERAL NOTES:

SEE SHEET G-9 FOR APPENDIX B CODE SUMMARY INFORMATION

SEE SHEET A-001 FOR ADDITIONAL GENERAL NOTES, ABBREVIATIONS AND SYMBOLS

METAL BUILDING COMPONENTS SHOWN ARE CONCEPTUAL FOR DESIGN INTENT ONLY. METAL BUILDING MANUFACTURER SHALL PROVIDE ACTUAL DESIGN AND CONSTRUCTION DETAILS.

SEE "E" AND "C" DWGS FOR LOCATION OF ADJACENT GENERATORS AND TRANSFORMERS.

DOOR LANDING AT DC-100B SHALL SLOPE TO ADJACENT PAVEMENT TO ACCOMMODATE ELECTRICAL EQUIPMENT INSTALLATION AND FUTURE REMOVAL, SEE "C" DWGS.

*LANDING SHALL EXTEND TO EDGE OF ADJACENT PAVEMENT.

FLOOR PLAN
3/16" = 1'-0"

© 2020 CDM SMITH. ALL RIGHTS RESERVED. REUSE OF DOCUMENTS, THESE DOCUMENTS AND DESIGNS PROVIDED BY PROFESSIONAL SERVICE, INCORPORATED HEREIN, ARE THE PROPERTY OF CDM SMITH AND ARE NOT TO BE USED, IN WHOLE OR PART, FOR ANY OTHER PROJECT WITHOUT THE WRITTEN AUTHORIZATION OF CDM SMITH.

REV. NO.	DATE	DRWN	CHKD	REMARKS

DESIGNED BY: C. SOLLOG
 DRAWN BY: K. DEMARCO
 SHEET CHKD BY: C. SOLLOG
 CROSS CHKD BY: L. ARNON
 APPROVED BY: M. ALFORD
 DATE: JANUARY 2021


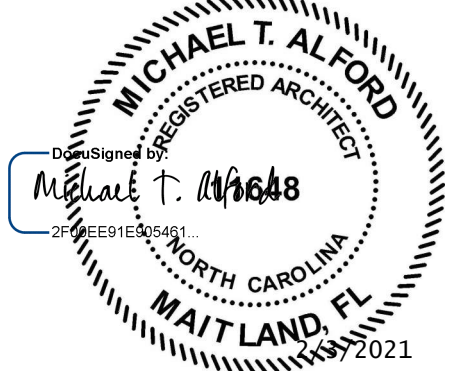
CDM Smith
 4600 Park Road, Suite 240
 Charlotte, NC 28209
 Tel: (704) 342-4546
 F-1255



UNION COUNTY PUBLIC WORKS
 UNION COUNTY, NORTH CAROLINA
**YADKIN REGIONAL WATER SUPPLY
 WATER TREATMENT PLANT AND
 FINISHED WATER INFRASTRUCTURE**

**MAIN ELECTRICAL BUILDING
 FLOOR PLAN**

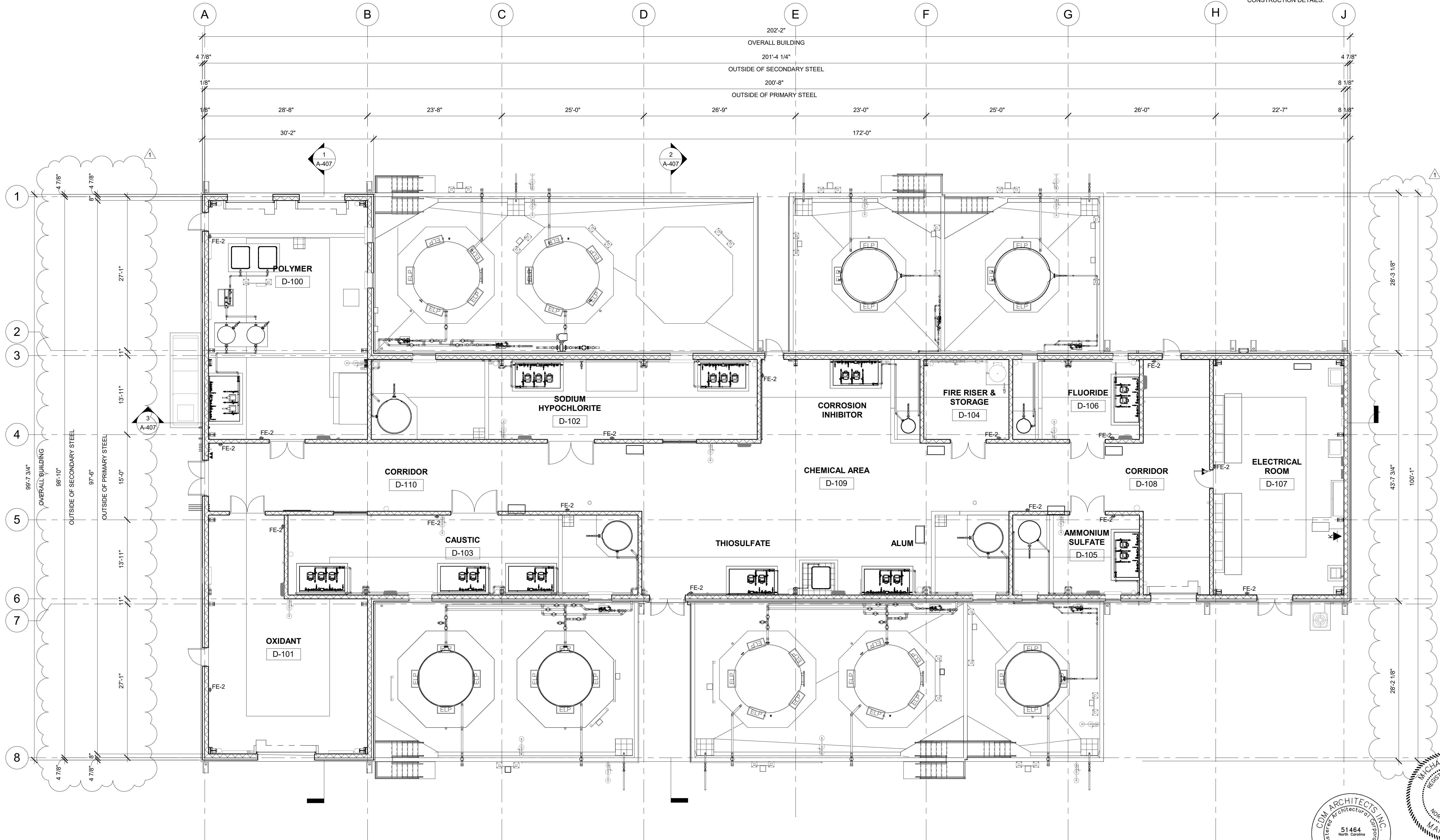
PROJECT NO. 28600-231695	FILE NAME: AW2000EB.rvt
SHEET NO. A-302	

CDM Architects Inc.
 101 Southhall Lane
 Suite 200
 Maitland, Florida 32751

GENERAL NOTES

SEE SHEET G-10 FOR APPENDIX B CODE SUMMARY INFORMATION
 SEE SHEET A-001 FOR ADDITIONAL GENERAL NOTES, ABBREVIATIONS AND SYMBOLS
 METAL BUILDING COMPONENTS SHOWN ARE CONCEPTUAL FOR DESIGN INTENT ONLY. METAL BUILDING MANUFACTURER SHALL PROVIDE ACTUAL DESIGN CONSTRUCTION DETAILS.



FLOOR PLAN
 1/8" = 1'-0"

© 2020 CDM SMITH. ALL RIGHTS RESERVED. REUSE OF DOCUMENTS, THESE DOCUMENTS AND DESIGNS PROVIDED BY PROFESSIONAL SERVICE, INCORPORATED HEREIN, ARE THE PROPERTY OF CDM SMITH AND ARE NOT TO BE USER, IN WHOLE OR PART, FOR ANY OTHER PROJECT WITHOUT THE WRITTEN AUTHORIZATION OF CDM SMITH.

REV. NO.	DATE	DRWN	CHKD	REMARKS

DESIGNED BY: C. SOLLOG
 DRAWN BY: A. CULP
 SHEET CHKD BY: C. SOLLOG
 CROSS CHKD BY: L. ARNON
 APPROVED BY: M. ALFORD
 DATE: JANUARY 2021

CDM Smith
 4600 Park Road, Suite 240
 Charlotte, NC 28209
 Tel: (704) 342-4546
 F-1255



UNION COUNTY PUBLIC WORKS
 UNION COUNTY, NORTH CAROLINA
**YADKIN REGIONAL WATER SUPPLY
 WATER TREATMENT PLANT AND
 FINISHED WATER INFRASTRUCTURE**

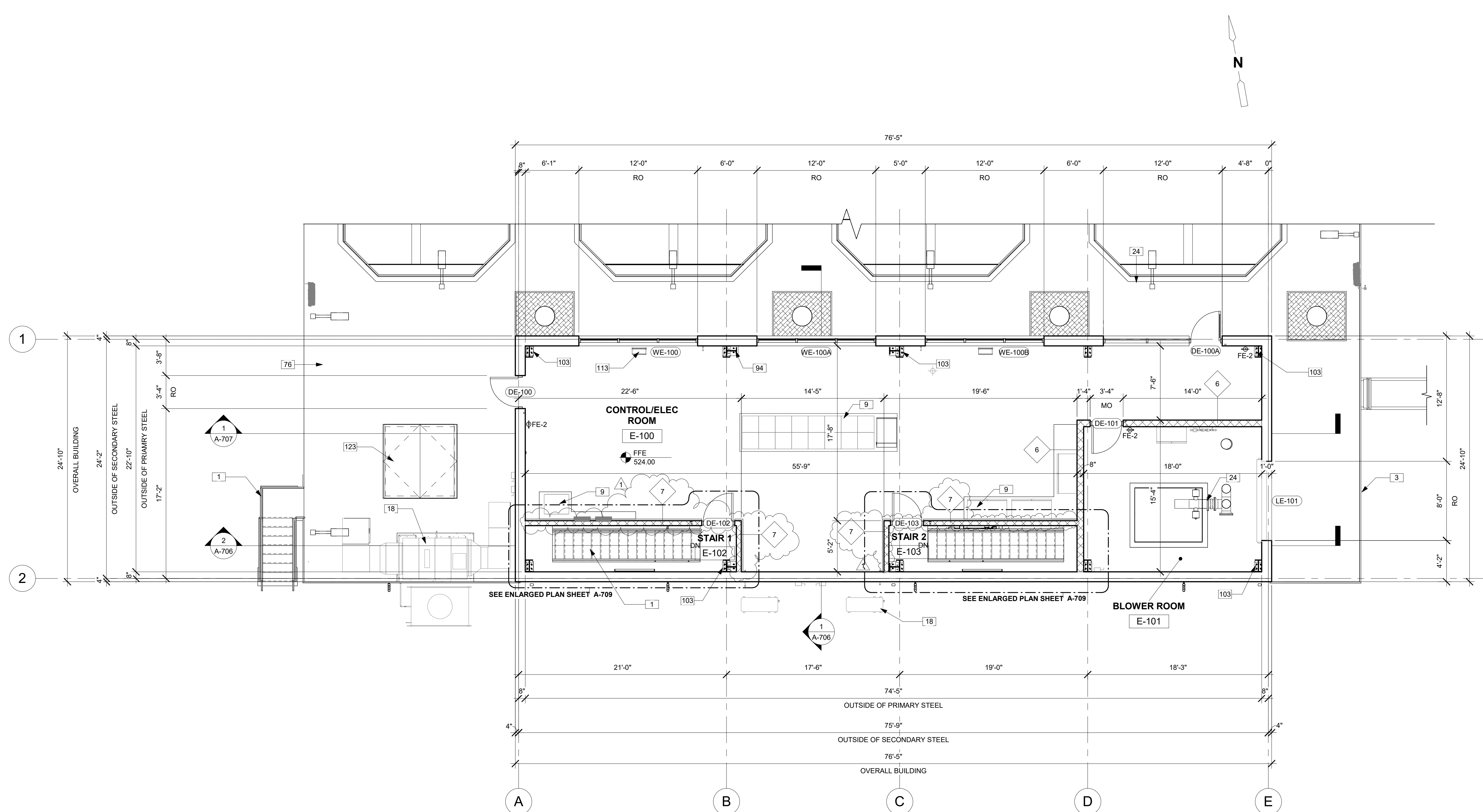
**CHEMICAL BUILDING
 OVERALL FLOOR PLAN**

PROJECT NO. 28600-231695
 FILE NAME: AWZ000CB.RVT
 SHEET NO. **A-402**

KEYNOTE LEGEND	
KEY VALUE	KEYNOTE TEXT
1	ALUMINUM STAIR WITH ALUMINUM GUARDRAIL AND HANDRAIL, SEE "S" DWGS
3	ALUMINUM GUARDRAIL, TYP. SEE "S" DWGS
9	ELECTRICAL EQUIPMENT, SEE "E" DWGS
18	HVAC EQUIP. SEE "H" DWGS
24	PROCESS MECH EQUIP. SEE "M" DWGS
76	CONCRETE STRUCTURE, SEE "S" DWGS
94	PAINTED STEEL PORTAL FRAME, TYP
103	PAINTED STEEL BENT, TYP
113	CONTROL CONSOLE, SEE "I" DWGS
123	EQUIPMENT ACCESS HATCH, SEE "S" DWGS

GENERAL NOTES

SEE SHEET G-11 FOR APPENDIX B CODE SUMMARY INFORMATION
 SEE SHEET A-001 FOR ADDITIONAL GENERAL NOTES, ABBREVIATIONS AND SYMBOLS
 METAL BUILDING COMPONENTS SHOWN ARE CONCEPTUAL FOR DESIGN INTENT ONLY. METAL BUILDING MANUFACTURER SHALL PROVIDE ACTUAL DESIGN AND CONSTRUCTION DETAILS.



FLOOR PLAN
 3/16" = 1'-0"

© 2020 CDM SMITH. ALL RIGHTS RESERVED. REUSE OF DOCUMENTS, THESE DOCUMENTS AND DESIGNS PROVIDED BY PROFESSIONAL SERVICE, INCORPORATED HEREIN, ARE THE PROPERTY OF CDM SMITH AND ARE NOT TO BE USED, IN WHOLE OR PART, FOR ANY OTHER PROJECT WITHOUT THE WRITTEN AUTHORIZATION OF CDM SMITH.

REV. NO.	DATE	DRWN	CHKD	REMARKS
1	11/21	BAS	CES	DCN 015

DESIGNED BY: C. SOLLOG
 DRAWN BY: B. SANTOS
 SHEET CHKD BY: C. SOLLOG
 CROSS CHKD BY: L. ARNON
 APPROVED BY: M. ALFORD
 DATE: JANUARY 2021

CDM Smith
 4600 Park Road, Suite 240
 Charlotte, NC 28209
 Tel: (704) 342-4546
 F-1255



UNION COUNTY PUBLIC WORKS
 UNION COUNTY, NORTH CAROLINA
**YADKIN REGIONAL WATER SUPPLY
 WATER TREATMENT PLANT AND
 FINISHED WATER INFRASTRUCTURE**

CDM Architects Inc.
 101 Southhall Lane
 Suite 200
 Maitland, Florida 32751

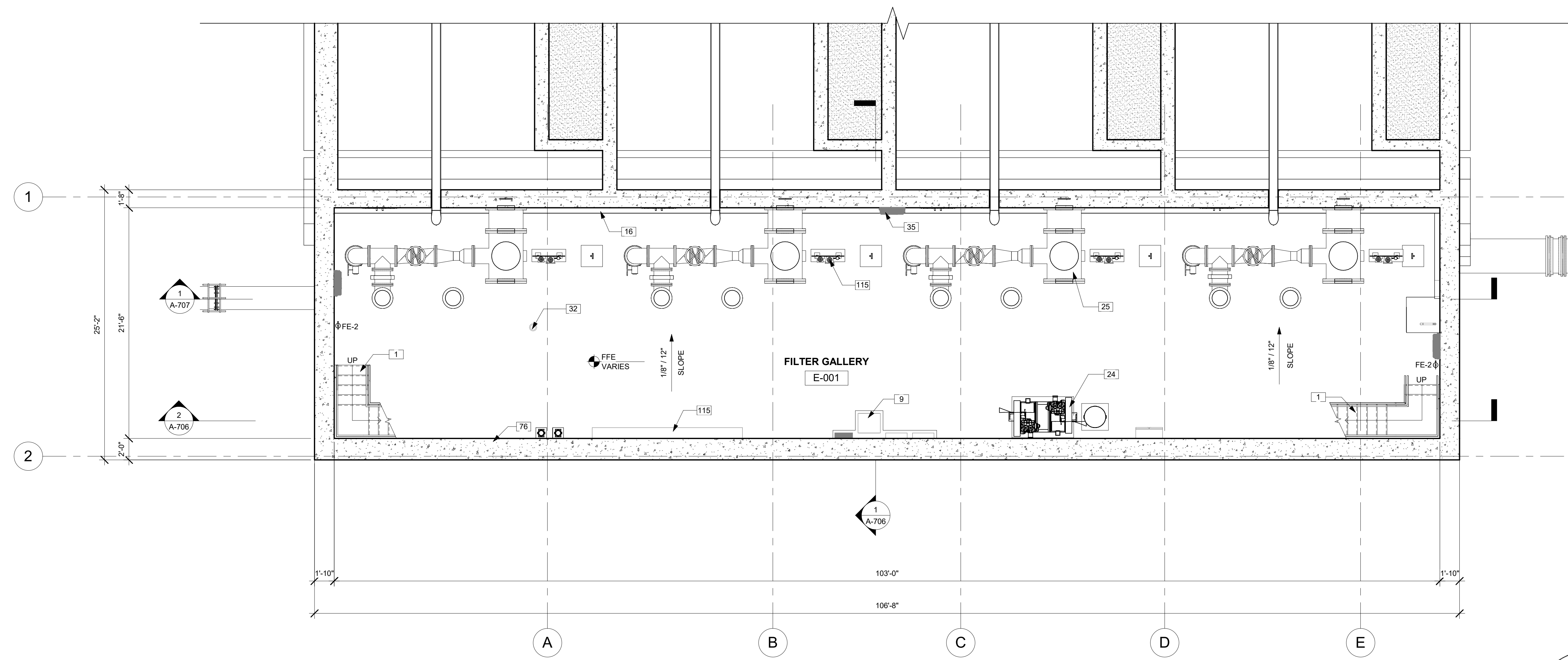
Michael T. Alford
 REGISTERED ARCHITECT
 11648
 NORTH CAROLINA
 MAITLAND, FL

PROJECT NO: 28600-231695
 FILE NAME: AWZ000FG.RVT
 SHEET NO:
A-703

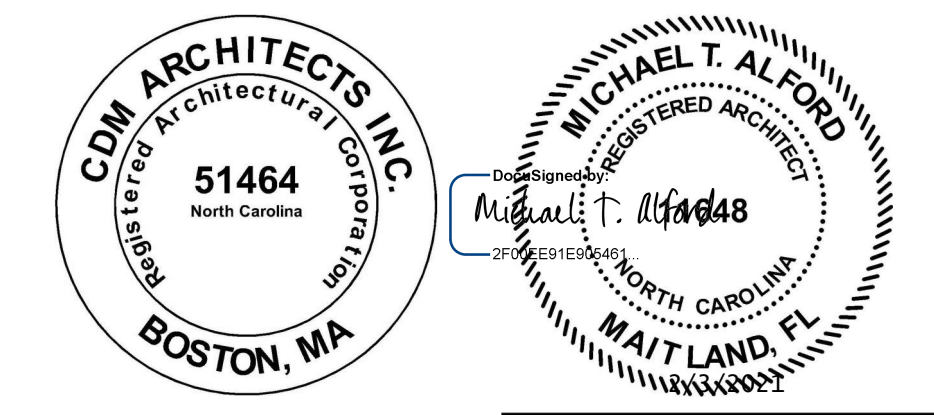
ISSUED FOR CONSTRUCTION

KEYNOTE LEGEND	
KEY VALUE	KEYNOTE TEXT
1	ALUMINUM STAIR WITH ALUMINUM GUARDRAIL AND HANDRAIL, SEE "S" DWGS
9	ELECTRICAL EQUIPMENT, SEE "E" DWGS
16	GRATING, SEE "S" DWGS
24	PROCESS MECH EQUIP, SEE "M" DWGS
25	PROCESS PIPING, SEE "M" DWGS
32	FLOOR DRAIN, TYP, SEE "P" DWGS
35	WASH HOSE STATION, TYP, SEE "P" DWGS
76	CONCRETE STRUCTURE, SEE "S" DWGS
115	PANEL MOUNTED ANALYZERS, SEE "I" DWGS

GENERAL NOTES
 SEE SHEET G-11 FOR APPENDIX B CODE SUMMARY INFORMATION
 SEE SHEET A-001 FOR ADDITIONAL GENERAL NOTES, ABBREVIATIONS AND SYMBOLS



FLOOR PLAN - FILTER GALLERY
 3/16" = 1'-0"



© 2020 CDM SMITH. ALL RIGHTS RESERVED. REUSE OF DOCUMENTS, THESE DOCUMENTS AND DESIGNS PROVIDED BY PROFESSIONAL SERVICE, INCORPORATED HEREIN, ARE THE PROPERTY OF CDM SMITH AND ARE NOT TO BE USED, IN WHOLE OR PART, FOR ANY OTHER PROJECT WITHOUT THE WRITTEN AUTHORIZATION OF CDM SMITH.

REV. NO.	DATE	DRWN	CHKD	REMARKS

DESIGNED BY: C. SOLLOG
 DRAWN BY: B. SANTOS
 SHEET CHKD BY: C. SOLLOG
 CROSS CHKD BY: L. ARNON
 APPROVED BY: M. ALFORD
 DATE: JANUARY 2021

CDM Smith
 4600 Park Road, Suite 240
 Charlotte, NC 28209
 Tel: (704) 342-4546
 F-1255

UNION COUNTY PUBLIC WORKS
 UNION COUNTY, NORTH CAROLINA
**YADKIN REGIONAL WATER SUPPLY
 WATER TREATMENT PLANT AND
 FINISHED WATER INFRASTRUCTURE**

**FILTER BUILDING
 PIPE GALLERY FLOOR PLAN**

PROJECT NO: 28600-231695
 FILE NAME: AWZ000FG.RVT
 SHEET NO:
A-702