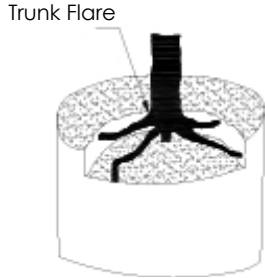
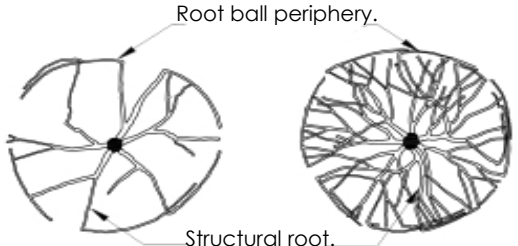


ACCEPTABLE



The point where top-most root(s) emerges from the trunk (trunk flare) should be within the top 2" of substrate. The trunk flare and the root ball interior should be free of defects including circling, kinked, ascending, and stem girdling roots. Structural roots shall reach the periphery near the top of the root ball.



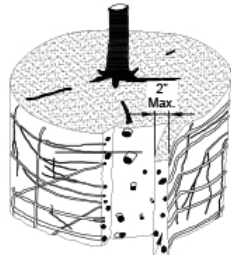
Roots radiate from trunk and reach side of root ball without deflecting down or around.

BEFORE SHAVING



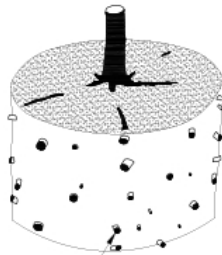
Shave root ball here to remove all roots growing on periphery.

SHAVING PROCESS



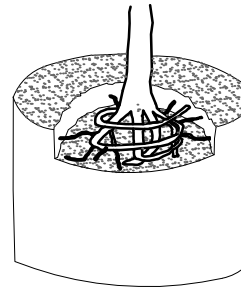
Shave outer periphery of the root ball a maximum of 2" thick.

SHAVING COMPLETE

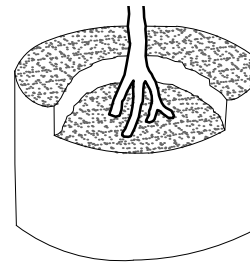


Root rips exposed at periphery of root ball. All roots growing around periphery are removed.

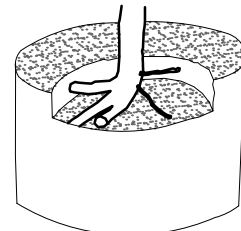
REJECTABLE



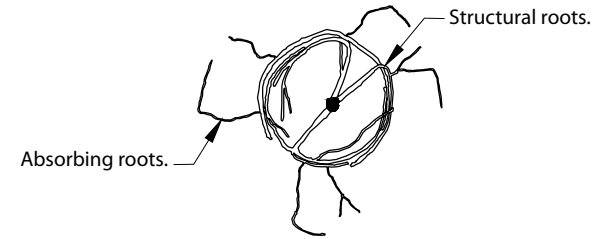
Structural roots circle interior of root ball. No structural roots are horizontal and reach the root ball periphery near the top of the root ball.



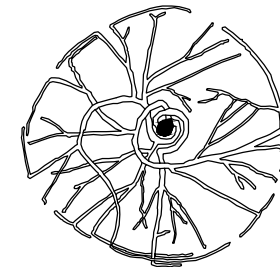
Structural roots descend into root ball interior. No structural roots are horizontal and reach the root ball periphery near the top of the root ball.



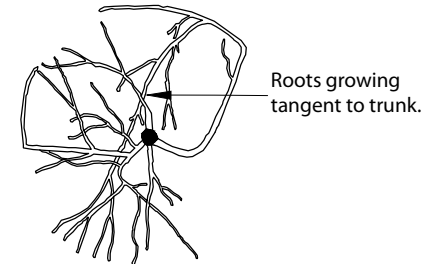
Structural roots primarily grow to one side.



Only absorbing roots reach the periphery near the top of the root ball. Structural roots mostly wrap or are deflected on the root ball interior.



Structural roots circle and do not radiate from the trunk.



Structural roots missing from one side, and/or grow tangent to trunk.

Notes:

1. Observations of roots shall occur prior to acceptance.
2. Small roots (1/4" or less) that grow around, up, or down the root ball periphery are considered a normal condition in container production and are acceptable however they should be eliminated at the time of planting. Roots on the periphery can be removed at the time of planting. (See root ball shaving container detail).
3. Shaving to be conducted using a sharp blade or hand saw eliminating no more than needed to remove all roots on the periphery of root ball.
4. Shaving can be performed just prior to planting.

UNION COUNTY, NORTH CAROLINA

ROOT CORRECTION DETAIL - CONTAINER-GROWN TREES AND SHRUBS